

Anti-CD24 Rabbit Monoclonal Antibody
Catalog # ABO16132**Specification**

Anti-CD24 Rabbit Monoclonal Antibody - Product Information

Application	WB, IP
Primary Accession	P25063
Host	Rabbit
Isotype	IgG
Reactivity	Human
Clonality	Monoclonal
Format	Liquid

Description

Anti-CD24 Rabbit Monoclonal Antibody . Tested in WB, IP applications. This antibody reacts with Human.

Anti-CD24 Rabbit Monoclonal Antibody - Additional Information

Gene ID 100133941

Other Names

Signal transducer CD24, Small cell lung carcinoma cluster 4 antigen, CD24, CD24, CD24A

Calculated MW

31-45 kDa KDa

Application Details

WB 1:500-1:2000
IP 1:50

Contents

Rabbit IgG in phosphate buffered saline, pH 7.4, 150mM NaCl, 0.02% sodium azide and 50% glycerol, 0.4-0.5mg/ml BSA.

Immunogen

A synthesized peptide derived from human CD24

Purification

Affinity-chromatography

Storage

Store at -20°C for one year. For short term storage and frequent use, store at 4°C for up to one month. Avoid repeated freeze-thaw cycles.

Anti-CD24 Rabbit Monoclonal Antibody - Protein Information

Name CD24

Synonyms CD24A

Function

May have a pivotal role in cell differentiation of different cell types. Signaling could be triggered by the binding of a lectin- like ligand to the CD24 carbohydrates, and transduced by the release of second messengers derived from the GPI-anchor. Modulates B-cell activation responses. Promotes AG-dependent proliferation of B-cells, and prevents their terminal differentiation into antibody-forming cells (PubMed:11313396). In association with SIGLEC10 may be involved in the selective suppression of the immune response to danger-associated molecular patterns (DAMPs) such as HMGB1, HSP70 and HSP90. Plays a role in the control of autoimmunity (By similarity).

Cellular Location

Cell membrane; Lipid-anchor, GPI-anchor.

Tissue Location

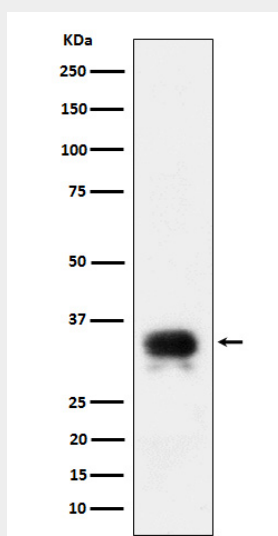
B-cells. Expressed in a number of B-cell lines including P32/ISH and Namalwa. Expressed in erythroleukemia cell and small cell lung carcinoma cell lines. Also expressed on the surface of T-cells.

Anti-CD24 Rabbit Monoclonal Antibody - Protocols

Provided below are standard protocols that you may find useful for product applications.

- [Western Blot](#)
- [Blocking Peptides](#)
- [Dot Blot](#)
- [Immunohistochemistry](#)
- [Immunofluorescence](#)
- [Immunoprecipitation](#)
- [Flow Cytometry](#)
- [Cell Culture](#)

Anti-CD24 Rabbit Monoclonal Antibody - Images



Western blot analysis of CD24 expression in SH-SY5Y cell lysate.